

# Things to consider when providing information and taking photographs for your card:

IMAGE 1

## FRONT

- Remember the actual size of the card is 2 1/2 inches by 3 1/2 inches
- Consider the angle of your photo.
- The more of the vehicle shown will reduce the size of the vehicle.. IMAGE 1
- A close-up of your vehicle will create a more impactful design. IMAGE 2
- We will crop the photo to best fit, so take photo of entire vehicle.
- Be aware of the background (people/trash/etc).
- Set camera to the highest photo resolution (HD if possible) as the quality of the photograph will effect the clarity of the final product (we will review when we receive your photography).
- Be sure to include "owner name" and "city, state".



## BACK

- The back of your card will contain all of the specific facts ("stats") of your vehicle. This can include engine size, horsepower, transmission details, etc. Provide as much or as little as you'd like keeping in mind that the more items listed reduces the size of the type. IMAGE 3
- Provide a few "detail" photographs for us to include IE: engine, interior or any special feature you want to highlight.

IMAGE 2

## DESIGN

- We will design a custom card for your vehicle that best represents the style of your vehicle (hot rod, resto-mod, rat rod, etc.)
- Include any special requests to us before we begin the layout, such as the name of your vehicle (if you have named it), specific titles that you want ("World Class Nitrous" IMAGE 2, "I Love Lucy" IMAGE 3)
- If your photo allows we can add a custom background such as lightning or other effects. If this is something you would like us to do let us know prior to layout.

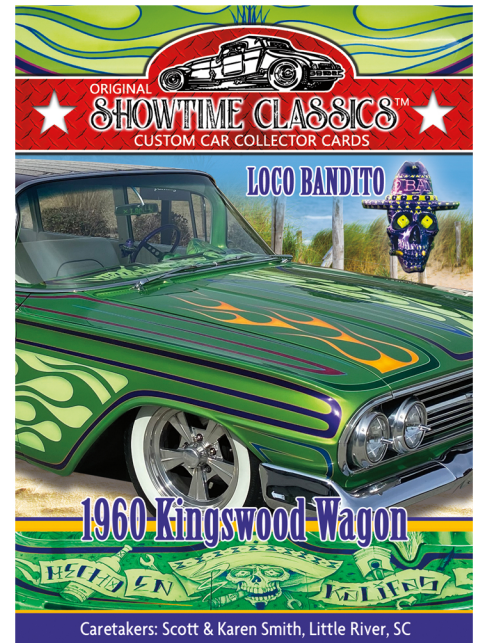


IMAGE 3



www.Studio1688.com • ShowtimeClassicsCards@gmail.com

We look forward to creating your custom card!

